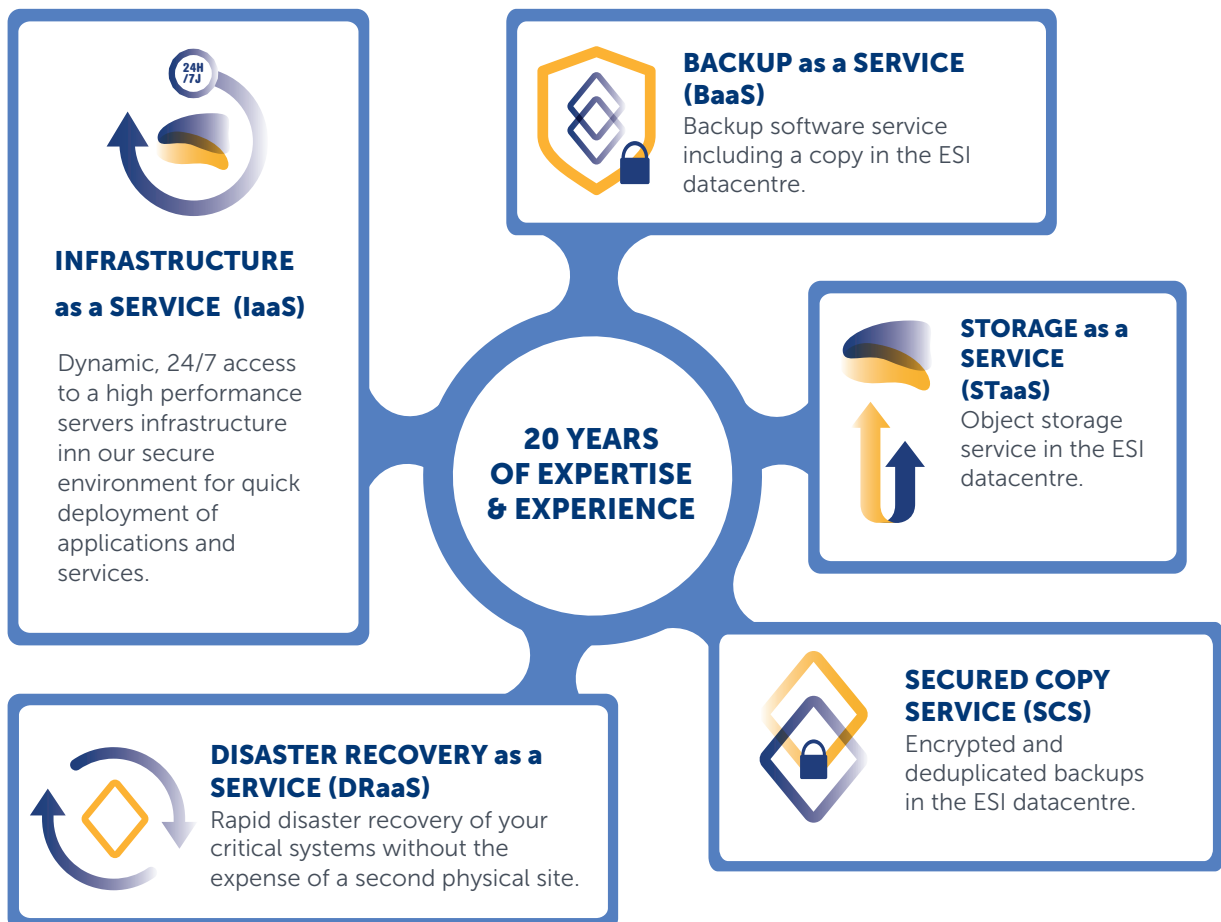


Cloud computing is a revolution in the management and operation of enterprise IT assets.

With over 20 years of expertise and experience in managing and protecting critical infrastructures, **ESI offers you a range of Cloud solutions** to help capitalize on this new reality in line with your business and IT needs.

Stratus, ESI high performance, resilient (Tier III) cloud infrastructure, is located in Canada. Stratus meets compliance requirements and **offers a competitive and easily predictable cost structure**. You know where your data resides, you can access it rapidly, and you benefit from the services of ESI professionals.



PROTECT your information,
PLAN your growth and
BENEFIT from current
enterprise-level technologies!

ENTRUST ESI experts the
management and operation of
your IT assets and **FOCUS** on
developing your business!

✉ expertise@esitechnologies.com

☎ 514 745-2524, ext. 1312

🌐 www.esitechnologies.com

10 good reasons to choose ESI Cloud Solutions

Adhering to cloud services requires that you **carefully select your provider** to ensure a smooth transition to this business model to **achieve your performance objectives** while maintaining the **security of your data**. ESI accompanies you in all stages of the implementation and in the changes required by the evolution of your business.

Quality Infrastructure

- ☛ Datacentres exclusively featuring **reliable equipment** of the best manufacturers
- ☛ "Enterprise" class infrastructure ensuring stability
- ☛ **Fully redundant** equipment, ensuring continuity without failure points
- ☛ Datacentres configured for **optimal performance** ensuring the expected speed
- ☛ **Tier III certified** datacentres, ensuring data security

Personalized Service

- ☛ **Fast, efficient and flexible** provisioning for increased agility
- ☛ Easily predictable competitive offering, with **no hidden fees**
- ☛ **No additional exit costs** at the end of the agreement
- ☛ **Competent, stable, bilingual and accessible** support team for quality service
- ☛ **Additional services** available at any time
 - On-site support team
 - Alert monitoring for the customer
 - Support for the environment
 - Accompaniment to cloud computing

